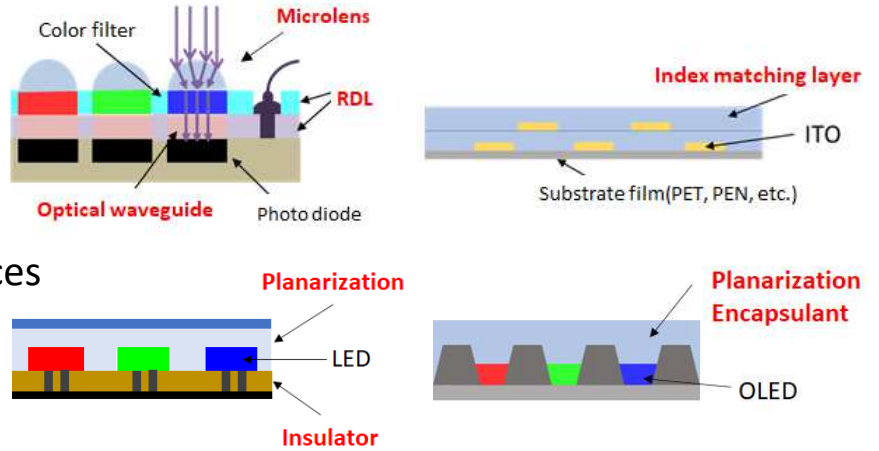


CELFY™ Series

Photo-patternable high transparency material
<Siloxane resin composition>

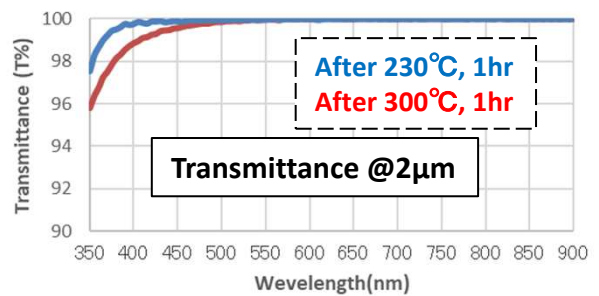
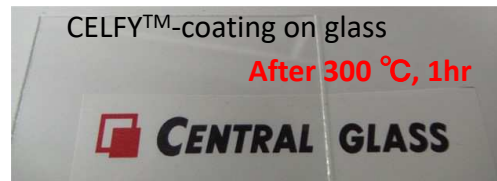
Application

- ✓ Optical devices
 - Image-sensor
 - Touch-sensor
 - μ-LED/OLED display
- ✓ Non-heat resistant devices



Feature

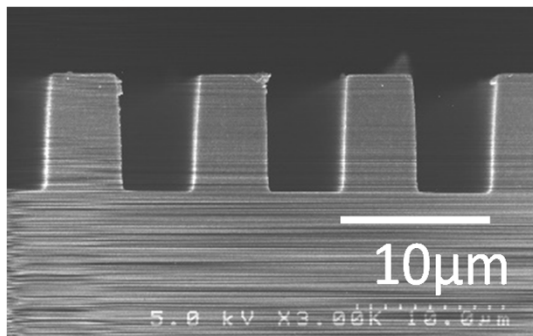
- ✓ Fluorine containing siloxane resin
- ✓ Excellent transparency
- ✓ Heat-resistance
- ✓ Refractive index controllable
- ✓ High-photosensitivity
- ✓ Low temperature curable
- ✓ Good adhesion



	Patternable thickness	Refractive Index @633nm	Transparency @380-800nm	Curing Temp.	Applicable substrates
CELFY™	~20μm	1.4~1.6	>98%@2μm	100°C	Si, Glass, Metal, PET, PI

Pattern shape

Rectangle type L/S=5μm/5μm
Thickness: 8μm



Microlens type

